



Public Health
England

Quality assurance of image processing and viewing equipment

Dental X-ray Protection Services

Ancillary equipment





Ancillary equipment inventory

Manufacturer*	Model*	Serial number/identifier or surgery number*	Year of manufacture*	Year of installation*	Last review [†]
a maker	the sensor	XYZ789A	2016	2017	2020

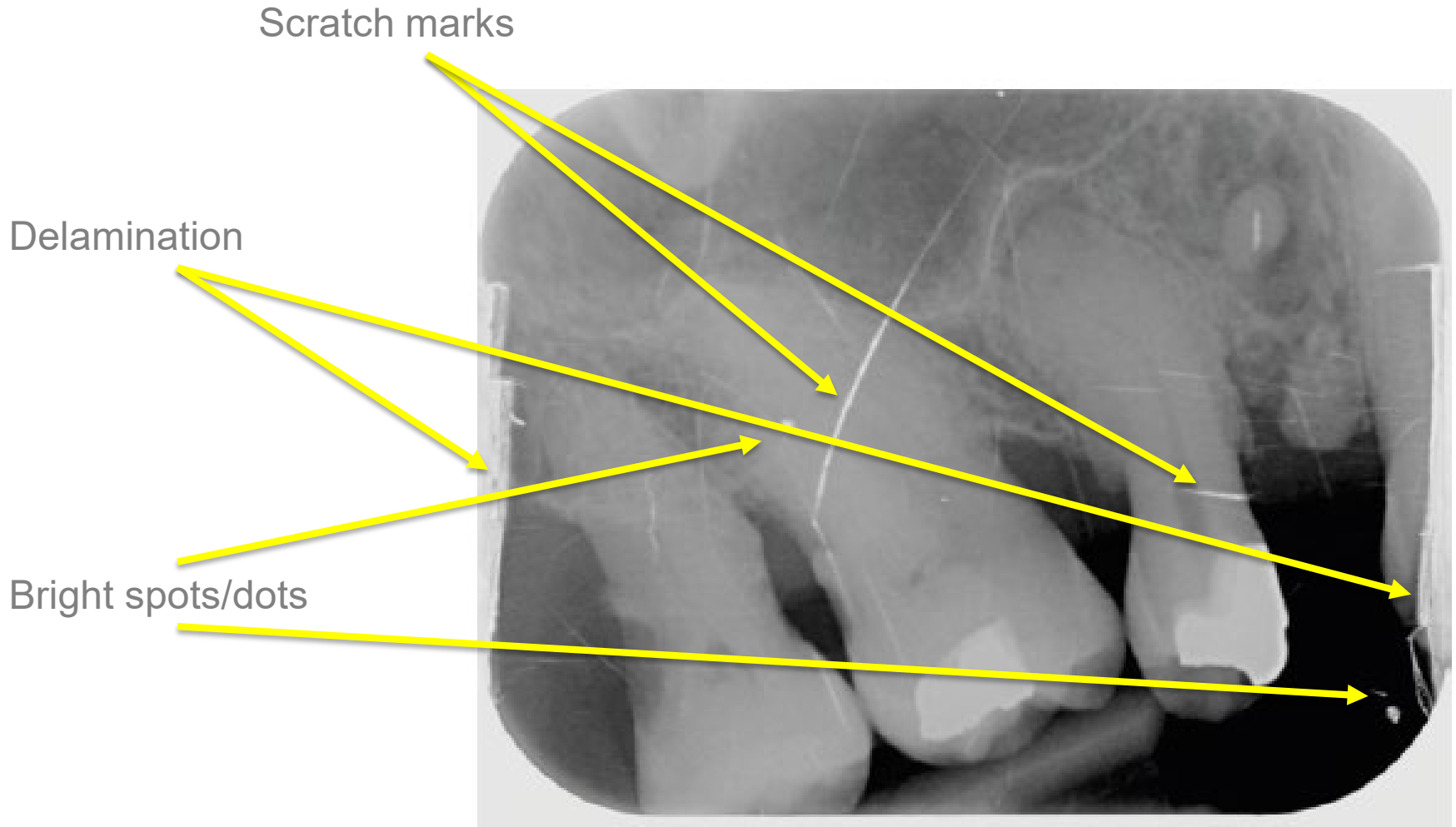


Digital image receptors





Digital image receptors



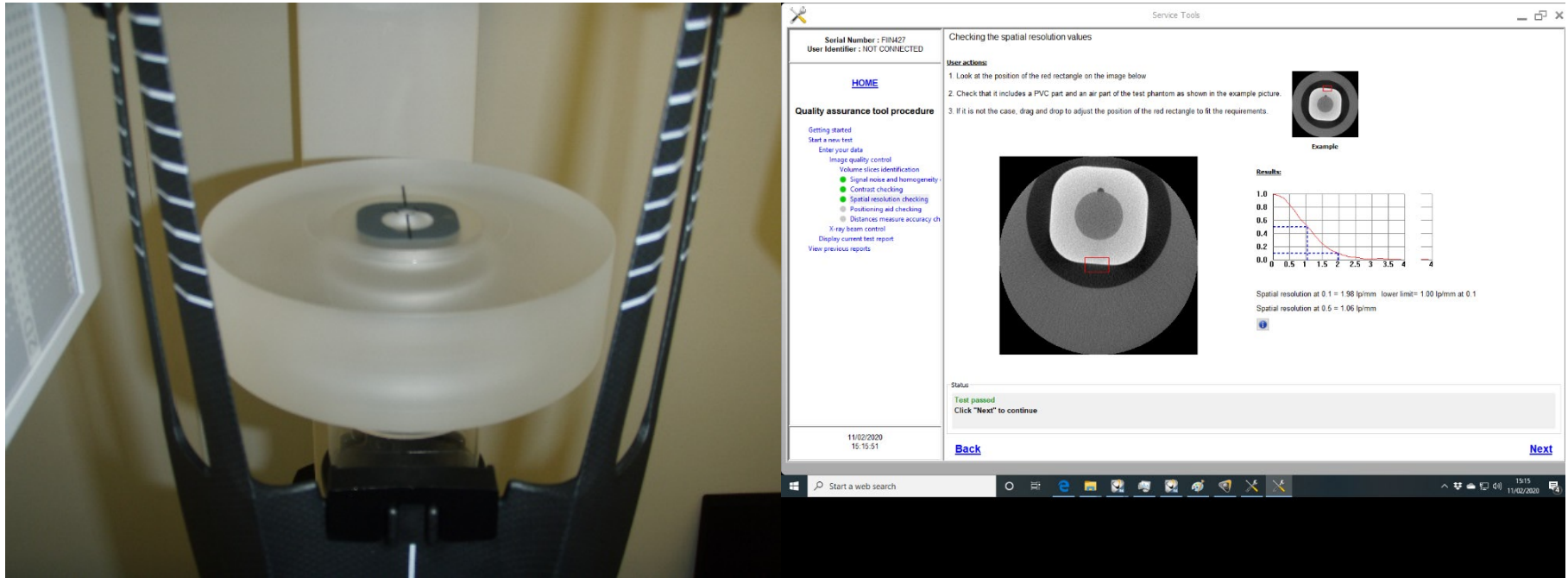


QA tests for digital image receptors

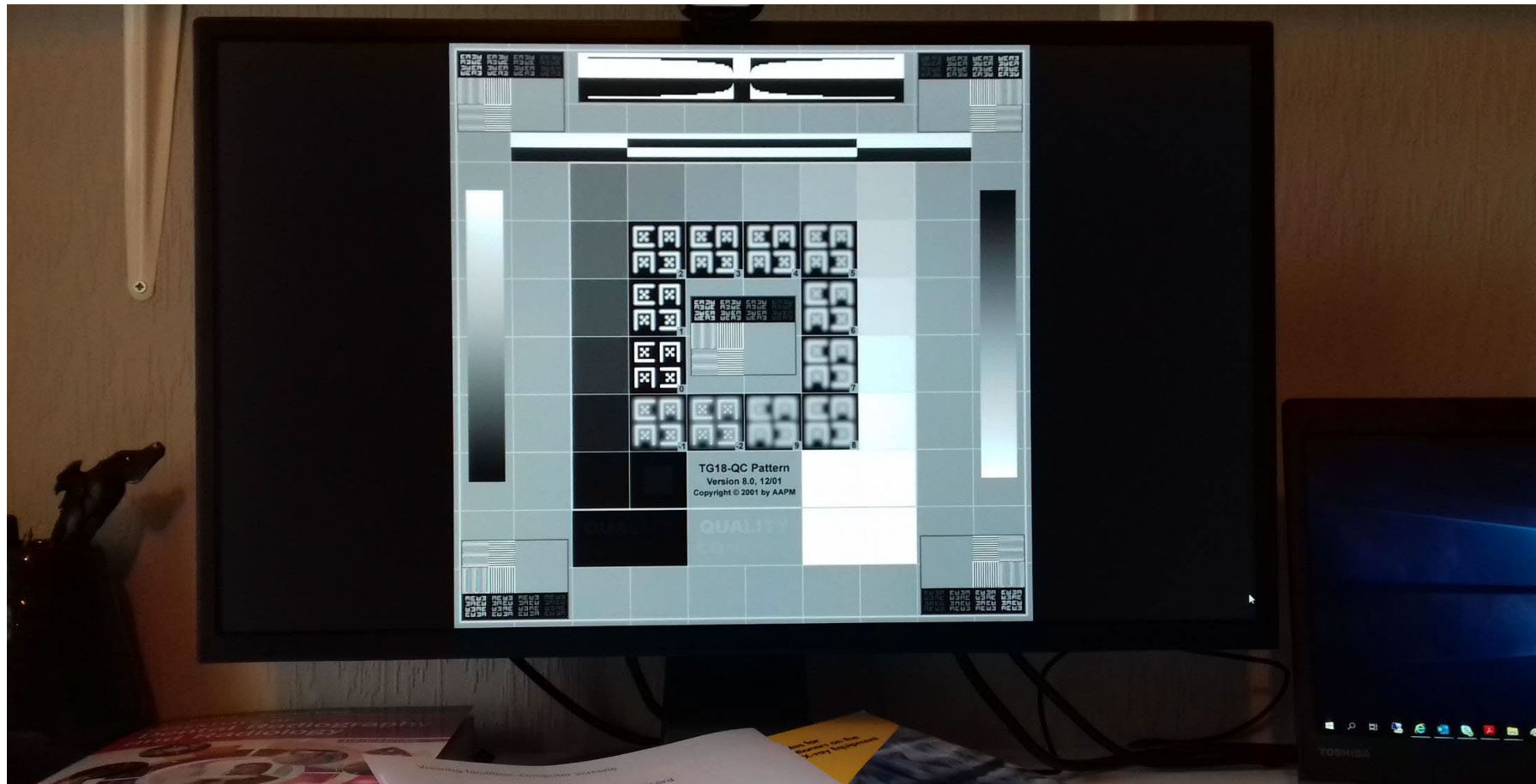
TABLE 5.1 Recommended schedule of QA tests for digital image receptors

Test	Frequency	Fail criteria
1 Visual inspection	Three-monthly, or whenever damage is suspected	Damage to wires, casings or phosphor
2 Image uniformity	Three-monthly, or whenever damage is suspected	Evidence of significant deterioration compared to baseline image. Any artefact that may affect clinical image quality
3 Subjective check of image quality	Three-monthly, or whenever damage is suspected	Evidence of significant deterioration compared to baseline image

CBCT systems



Computer screens and viewing conditions





Film-based processing and viewing equipment

A QA test film, produced using a step wedge and processed immediately after a change of processing chemicals, is compared to a laminated reference film to detect any reduction in image quality before patient films are processed.

