

Enhanced Perioperative Protocol

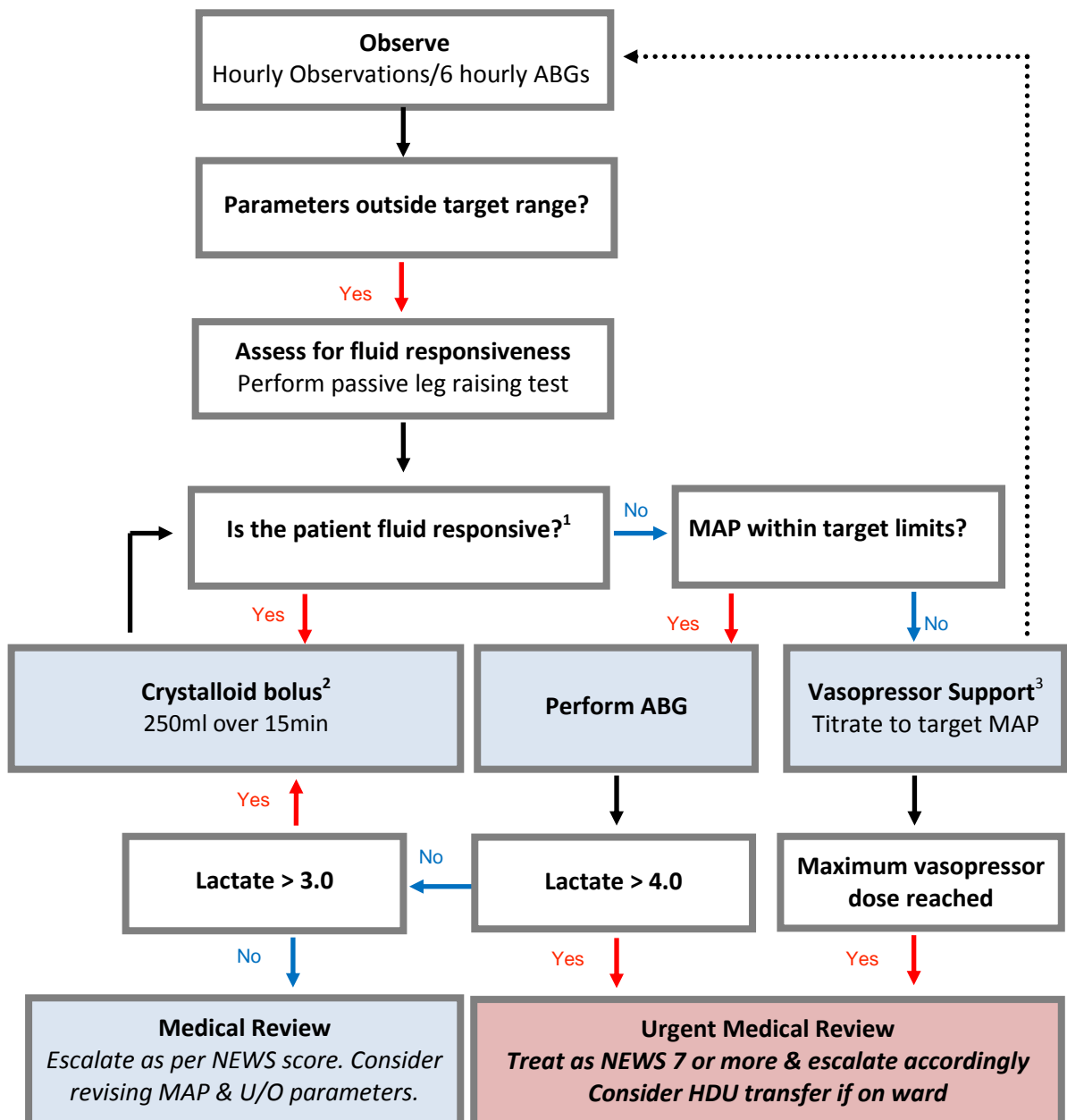
Post-Operative Destination

Nurse Enhanced Unit: Intermediate risk (3.1% mortality)

High Dependency Unit: High risk (9.1% mortality)

Check list:

- ☐ Pathway obs chart
- ☐ Target parameters set
- ☐ Fluid boluses prescribed
- ☐ Vasopressor prescribed
- ☐ Cardiac Monitoring in place



- 1) Fluid responsiveness is shown with a >10% increase in stroke volume after a passive leg raise or fluid bolus.
- 2) After four fluid boluses please take an ABG and seek a medical review
- 3) Ensure baseline ABG is taken prior to starting vasopressors. On the ward use the metaraminol protocol described in the Perioperative Manual and on the pharmacy monograph.