



### Practical 1: Accessing the Oracle Database

#### Objectives:

- To learn how to access your Deakin Oracle database
- To get familiar with basic SQL and SQL\*Plus commands

#### 1. Introduction

The Relational Database Management System (RDBMS) is responsible for accurately storing data and efficiently retrieving that data in response to user queries. The Oracle RDBMS is an industry leading database system.

The Oracle RDBMS supplies interface tools to access data stored in an Oracle database. One of these tools is known as SQL\*Plus, which is a command line interface. Our practicals will use the SQL\*Plus tool to learn the database language SQL and salient features of the Oracle DBMS.

#### 2. Access the Oracle Database

To access and use the Oracle database, you need to

- Connect to a Deakin server
- Access the student database (SSID) using your Deakin username and password.

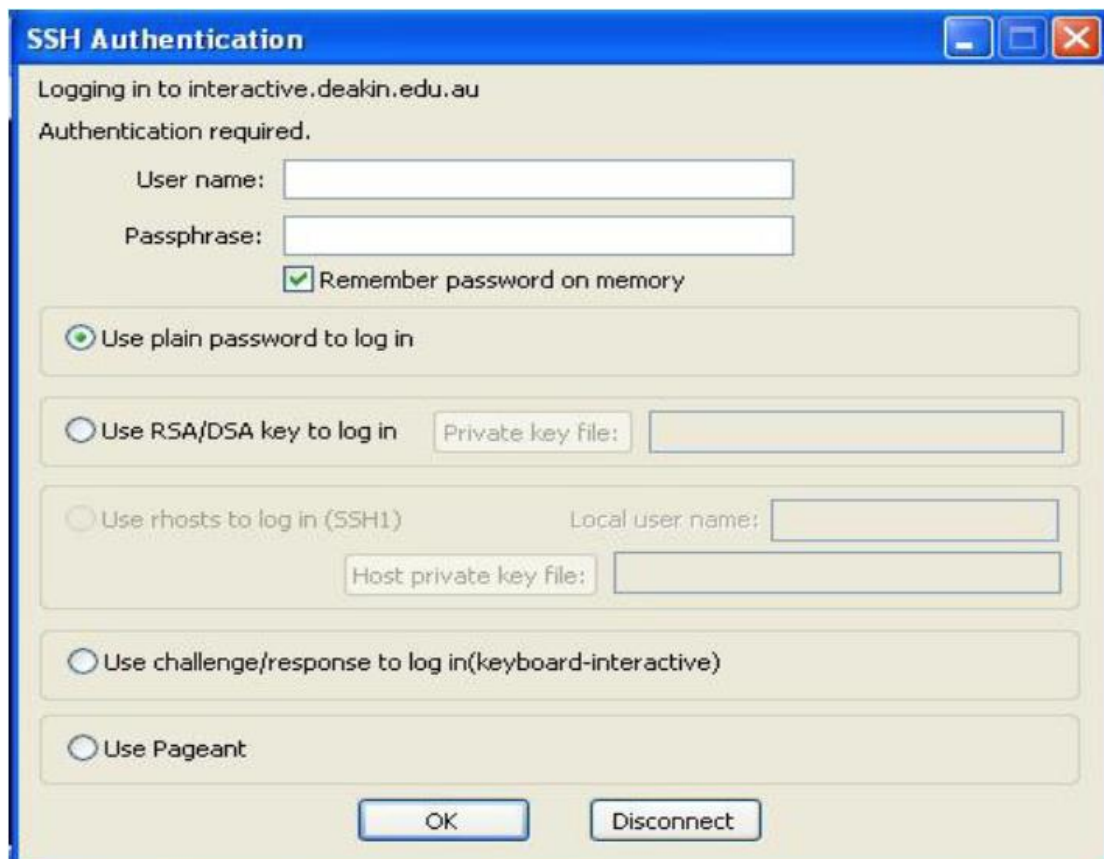
##### 2.1. Connect to a Deakin Server

SSH (Secure Shell) client software **Tera Term** allows you to securely log in and use the command interface on a remote Unix-based host.

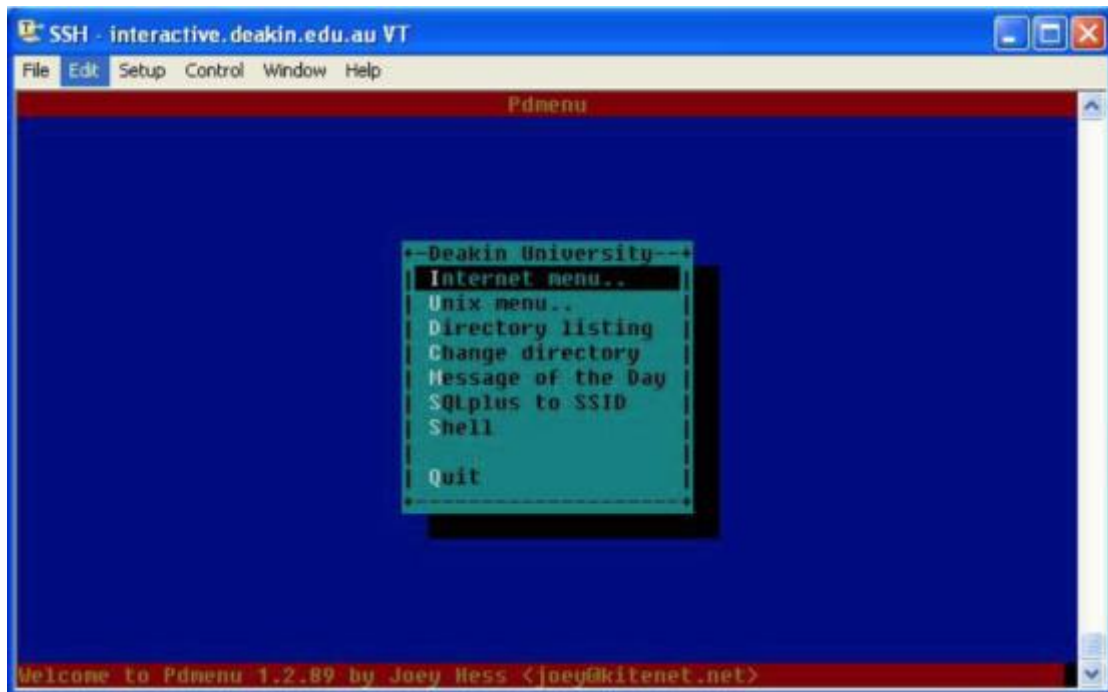
- Launch **Tera Term** from the START → All Programs → **Tera Term** → **Tera Term**. A “New connection” screen will display as follows, prompting you for the host name (i.e. *interactive.deakin.edu.au*, or *eros.deakin.edu.au*, or *bajor.its.deakin.edu.au*).



- Click "OK" and a new "SSH Authentication" window will display as follows, asking for your Deakin Username and Password. Type in your correct Deakin Username and Password, and then click "OK".



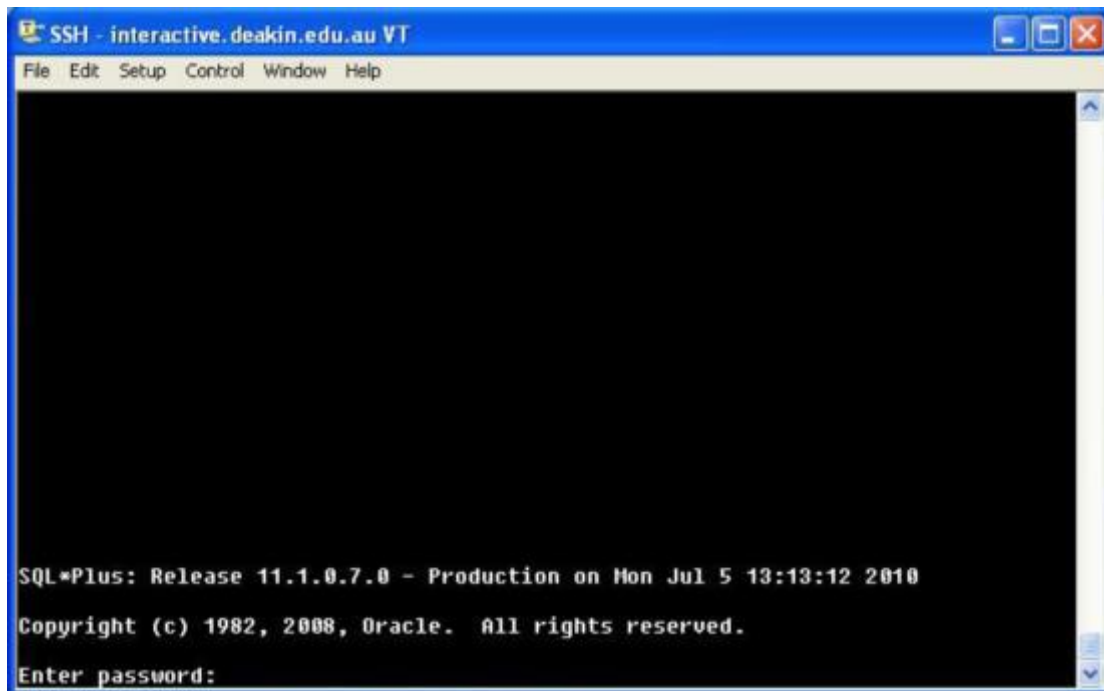
- If your Deakin Username and Password are typed in correctly, you will see the following window with the Pdmenu displayed, which means you are now connected to a Deakin server (e.g. *interactive.deakin.edu.au* in this demonstration).



## 2.2. Access the Oracle database (SSID)

- You can now use the up/down arrows to select "SQLplus to SSID". Hit the enter key to access your Oracle database. The following window will display, prompting you to enter your Deakin password.

**NOTE:** when you type in your Deakin password within this window, **no masking characters will be displayed**. So please make sure your password is typed in correctly.



- Type in your Deakin password correctly and then hit the “Enter” key, the following window will display with a SQL> prompt. It means that you are successfully connected to your own database on Deakin Oracle database server. Now you can type and run a SQL or SQL\*Plus command at the SQL> prompt.

