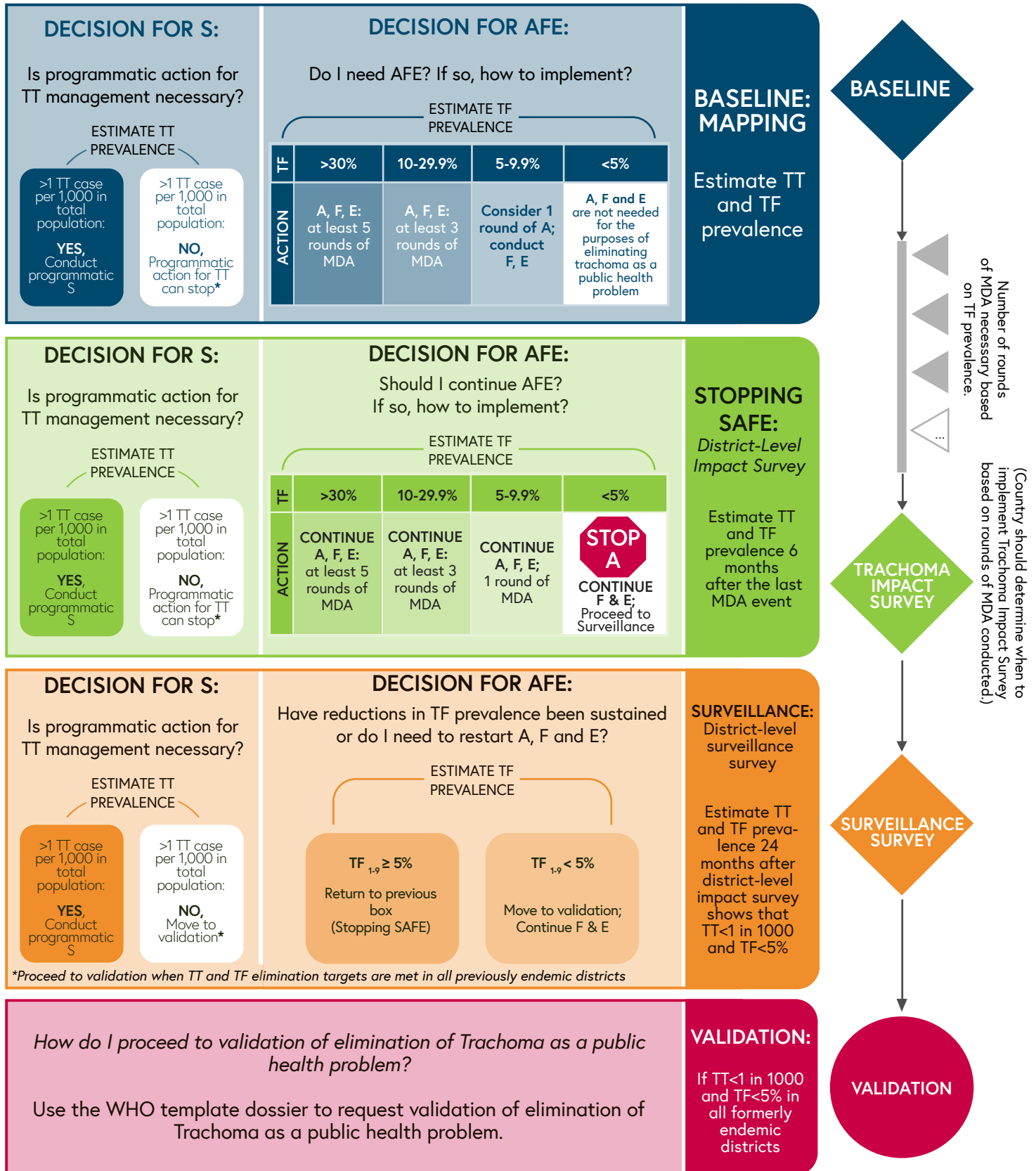


DISEASE-SPECIFIC ASSESSMENTS FOR THE ELIMINATION OF TRACHOMA AS A PUBLIC HEALTH PROBLEM

Note that this job aid only includes information on mandatory assessments and does not include optional assessments.

The SAFE Strategy is designed to prevent blindness from Trachoma. The components of SAFE are Surgery, Antibiotics, Facial cleanliness and Environmental improvement.



* All Individuals with TT should still be provided surgical services

ABBREVIATIONS

A: antibiotics | F: facial cleanliness | S: surgery | TT: trachomatous trichiasis
E: environmental improvement | MDA: mass drug administration | TF: trachomatous inflammation - follicular