

USING KUBITY ON DESKTOP

Guidelines

Kubity

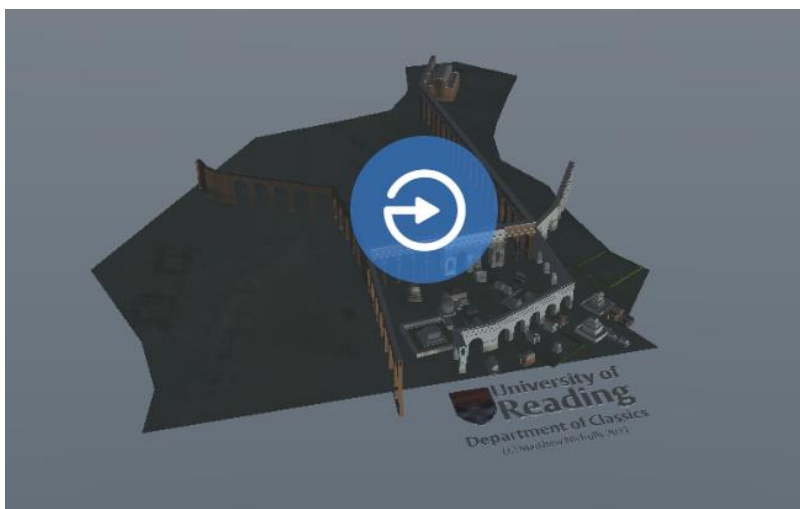
Kubity is a free smart viewer. It allows to you explore a selection of my 3D models of Rome in different ways, by rotating them, zooming into particular parts, 'walking through' at ground level and watching 'flyover' videos.

Kubity supports the latest desktop versions of Chrome, Firefox, Microsoft Edge and Safari.

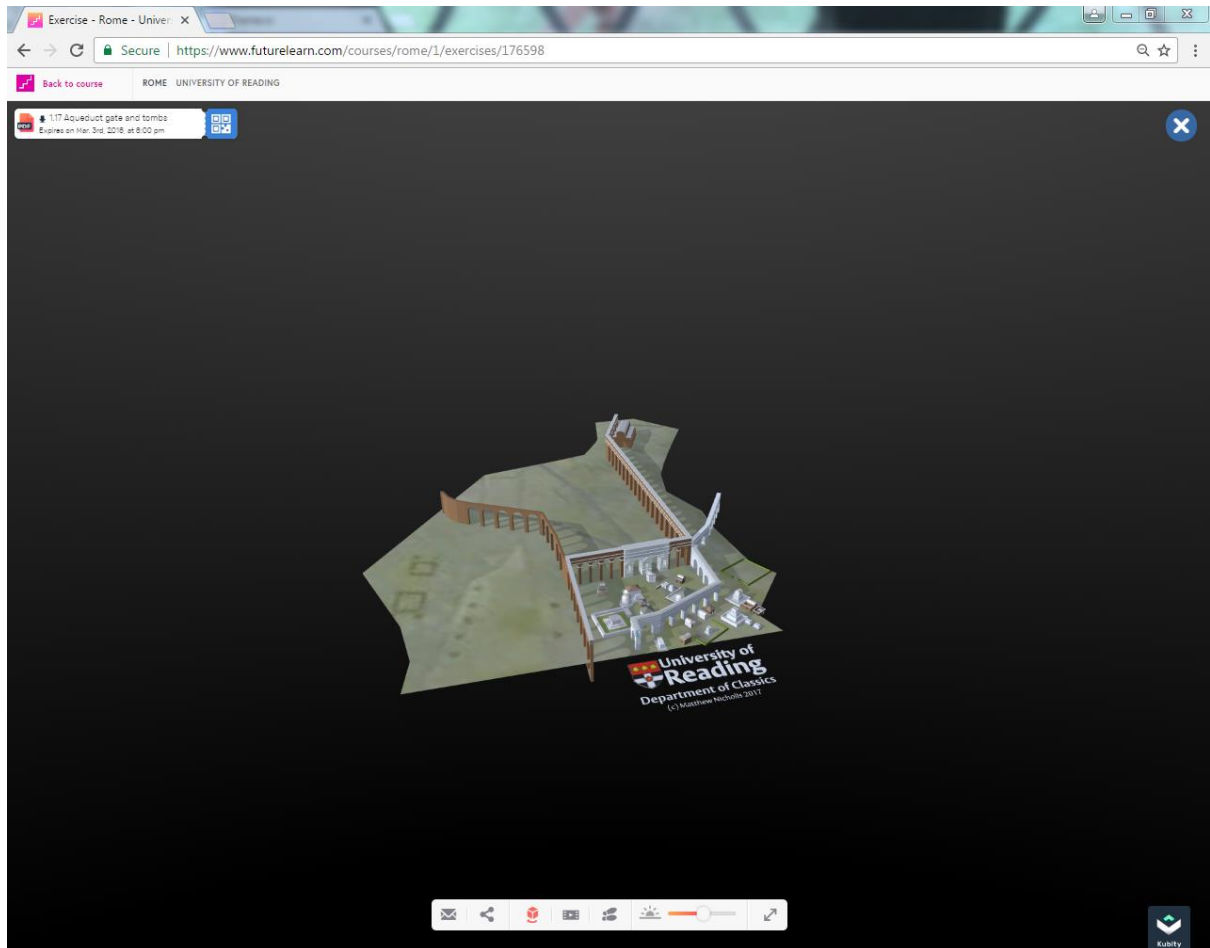
Please note: You must have JavaScript installed on your desktop for this to work and it is easier to navigate using a mouse. If have these, all you should then need to do is simply click on the link provided in each week to start exploring the model.

Opening Kubity on your desktop:

Click on the 'launch' button on the relevant Walkaround exercise Step to access the model. This should take you to a new screen that allows you to click on the blue, circular button shown in the screen shot below.



You may be asked to wait before you reach a screen that looks like the screenshot below.



You can view the model from different angles and explore it, by either 'walking through' from a first person perspective or watching a 'fly-through' video. You can find instructions (adapted from the Kubity website) on how to use these different modes below.

How do I change the view of the model?

You can rotate, zoom or pan across the model. These instructions appear at the top of the screen when you start to navigate the model.

To **rotate** the model, left-click on your mouse and drag.

To **zoom** in (or out) on the model, use your mouse wheel.

To **pan** across the model, right-click and drag.

To **reset the view** click on the cube on the main menu bar

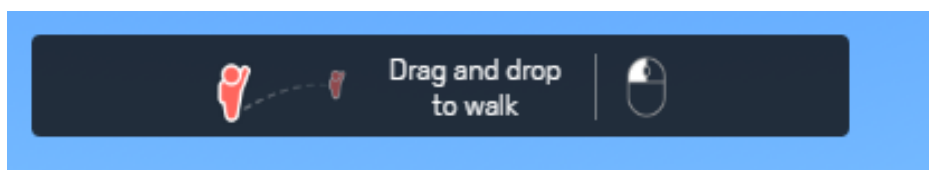


You can also play with the time of day in the model by sliding the marker on the main menu.



How do I walk inside the model?

To begin Walk mode on your web browser, click the footstep/person icon, then drag and drop the Person icon into the space you want to go. Click and hold the left mouse button to look, click and hold the right button to move.



You can either walk or 'run' in this mode. Watch out for the instructions that appear at the top of the model:

To **walk** in the model, press the right button on your mouse and drag

To **run** in the model, press both the left and right buttons on your mouse

How do I watch a Fly-through tour?

Fly-through tour is a cinematic fly-through view of the model that is automatically

generated using SketchUp scenes set by the owner of the model. To view the model in Fly-Through Tour, click the Tour icon.



How can I share the model?

You're very welcome to share the model with your friends and family. If you'd like to use the model within your teaching, or for other non-personal use, we're happy for you to do so, provided you include the following acknowledgment: **Copyright Matthew Nicholls, University of Reading, Department of Classics, 2017.**

There are several ways to share a model from Kubity. From a web browser, share via email by clicking the Mail icon. Click the Share icon to share on Facebook, Twitter, or LinkedIn. You can also use the PDF with the QR code and link for each individual model on the exercise Step on FutureLearn.

