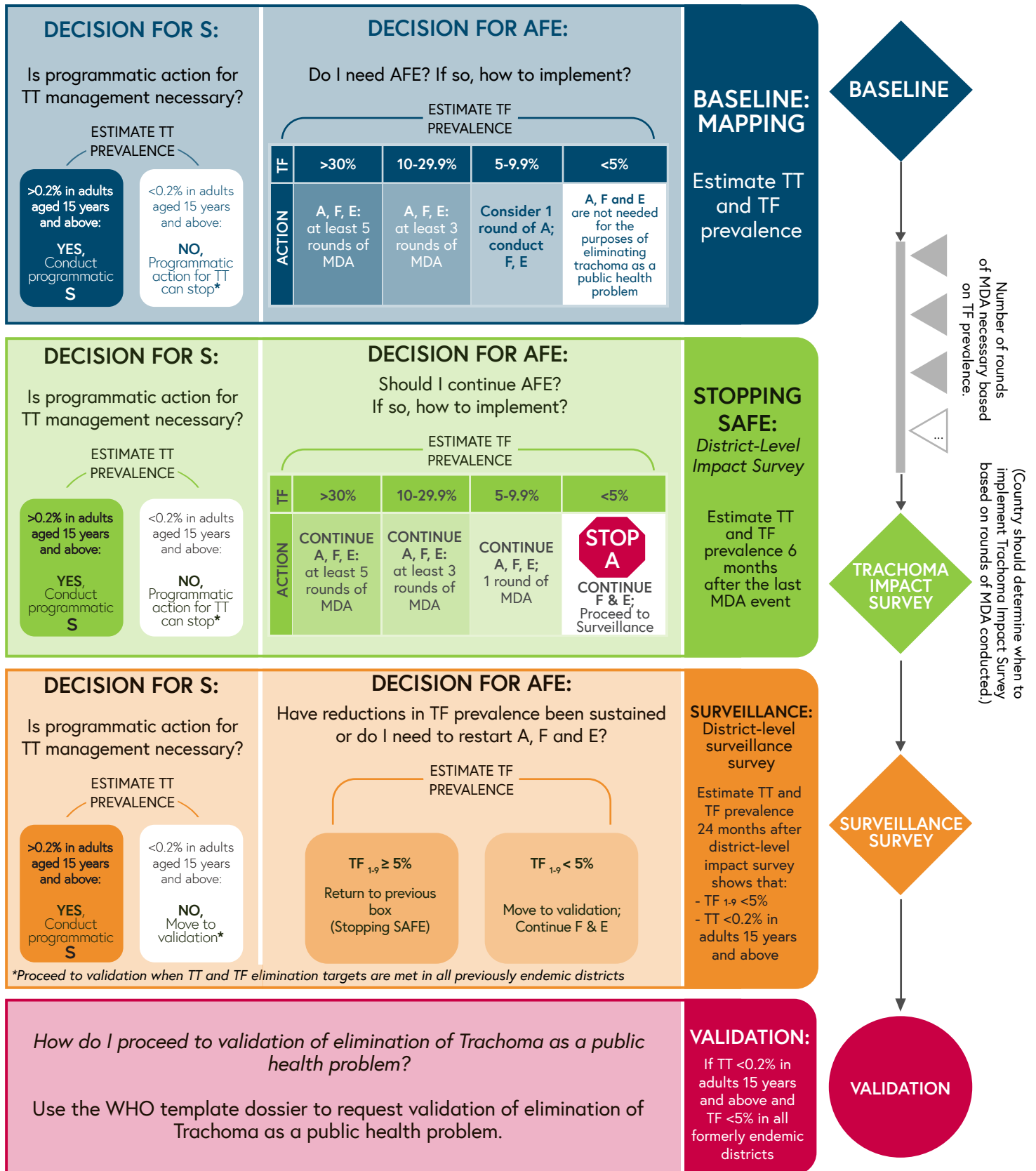


DISEASE-SPECIFIC ASSESSMENTS FOR THE ELIMINATION OF TRACHOMA AS A PUBLIC HEALTH PROBLEM

VERSION
2.0

Note that this job aid only includes information on mandatory assessments and does not include optional assessments.

The SAFE Strategy is designed to prevent blindness from Trachoma. The components of SAFE are Surgery, Antibiotics, Facial cleanliness and Environmental improvement.



ABBREVIATIONS

A: antibiotics | E: environmental improvement | F: facial cleanliness | MDA: mass drug administration | S: surgery | TF: trachomatous inflammation - follicular | TT: trachomatous trichiasis