

How to save lives in emergency laparotomy

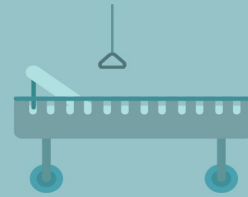
Emergency Laparotomy Collaborative



Screen patient
NEWS/SIRS/arterial
lactate



Is the patient septic?
Antibiotics within
one hour



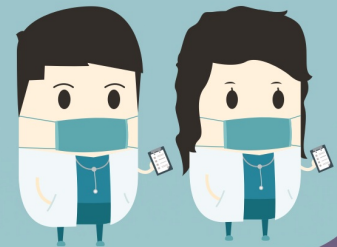
Theatre
within 6 hours
of decision to operate



ICU
for all patients



Cardiac output monitored
goal-directed fluid therapy



**Consultant surgeon
and anaesthetist**
in theatre



www.emergencylaparotomy.org.uk
rsc-tr.emergencylaparotomy@nhs.net
[@emlapcollaborative](https://twitter.com/emlapcollaborative)

